

AB 110

YACHT OVERVIEW HULL 197



MAIN CHARACTERISTICS:

Type of Vessel:	Motor Yacht	Gensets:	[2] KOHLER 32 kW each
Shipbuilder:	AB YACHTS, Next Yacht Group	Air Conditioning:	CONDARIA 180.000 BTU
Class & Certification:	✓ R.I.Na - C ✕ HULL • MACH Y - Unrestricted Navigation (Pleasure Yacht)	Bow thruster:	Electric bow thruster, Side Power 320Kg, 220V
Dimensions:	Length Overall (LOA) 33.70 m Maximum Beam 6.80 m Draught 1.30 m	Voltage:	400V, three-phase + neutral, 60Hz
Approx Displacement (Full):	110 Tonnes	Maximum Speed:	41 knots
Propulsion & Main Engines:	[3] MAN V12-2000 (2000 HP) each [2] MJP steerable waterjets + [1] MJP central booster	Cruising Speed:	35 knots @90 % of engine load
		Fuel Capacity:	11.500 litres ca.
		Water Capacity:	2.000 litres

ACCOMMODATIONS:

Owner's Cabin and Guests:

- [1] Suite Owner on the Lower deck
- [1] Vip Cabin on the Lower deck
- [2] Guest Cabins on the Lower deck with folding beds and sliding beds in each Cabin on the Lower Deck

Crew:

- [2] Crew Cabin (4 pax Crew)

Bathrooms:

- [4] Guest bathroom
- [1] Day-head on the Main Deck
- [2] Crew Bathroom with shared shower

AB 110
HULL # 197



■ VALSPAR - WHITE SIGNAL RAL 9003

■ AWLCRAFT - 2000 LSA BLACK

AB YACHTS

AB YACHTS













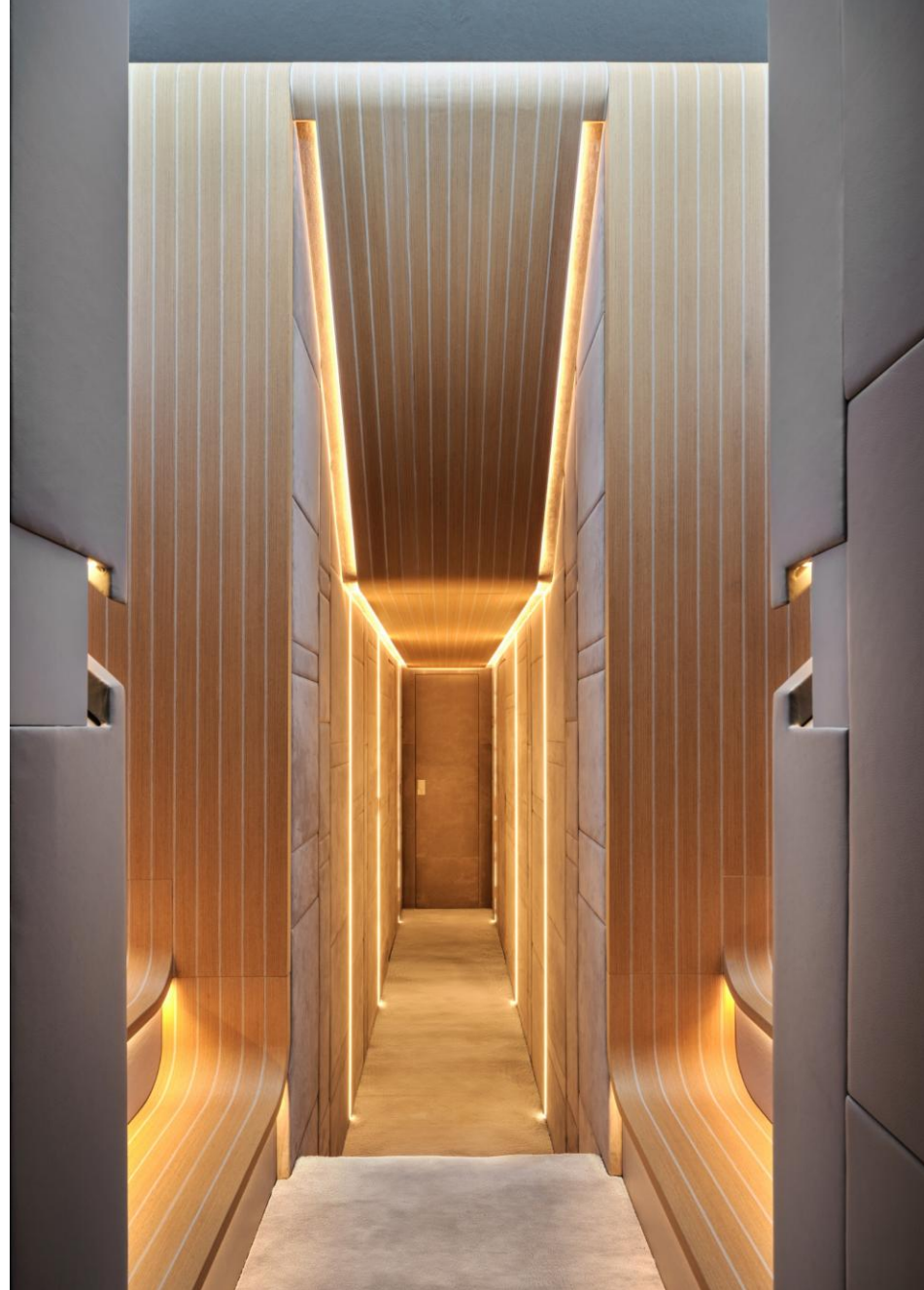














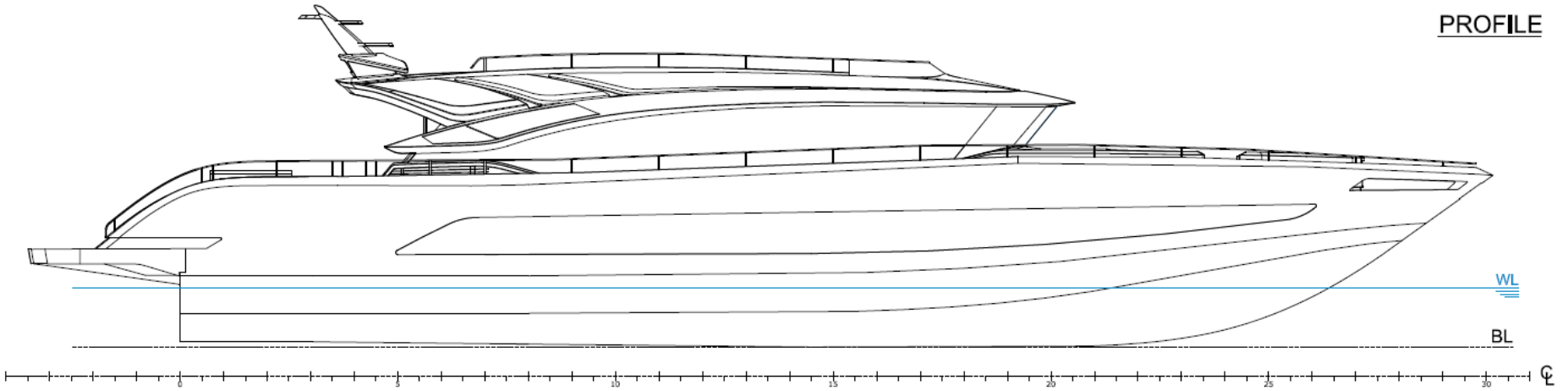




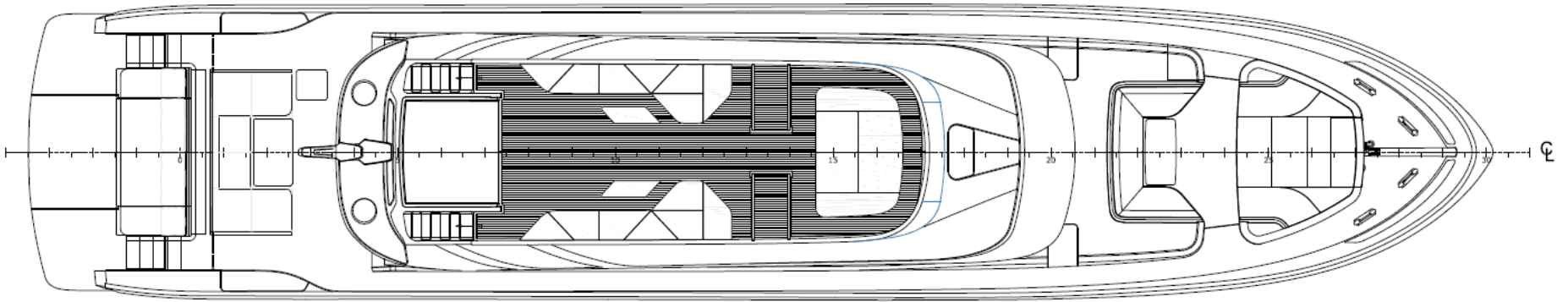




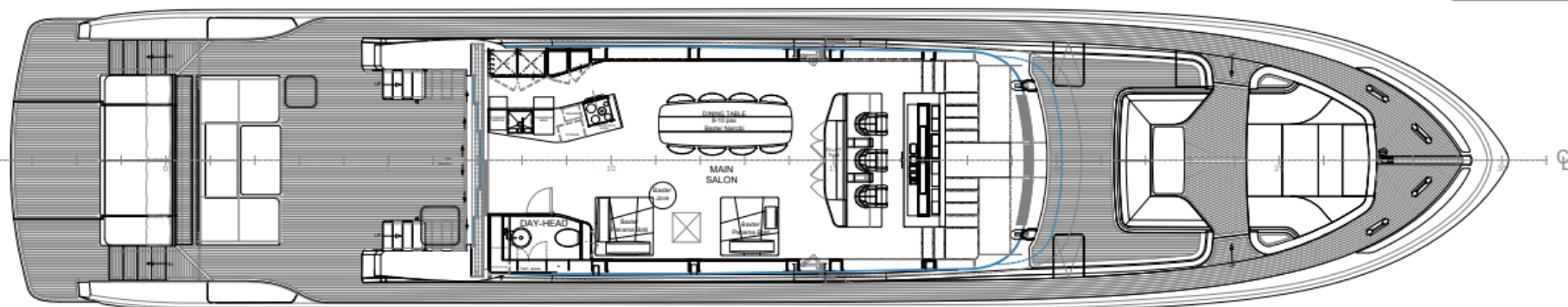
PROFILE



SUN DECK

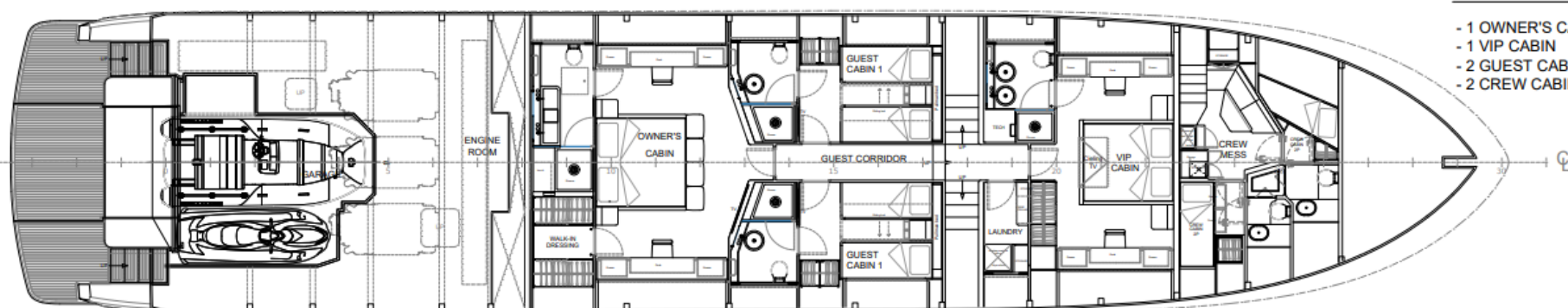


MAIN DECK



LOWER DECK

- 1 OWNER'S CABIN
- 1 VIP CABIN
- 2 GUEST CABIN
- 2 CREW CABIN



HOUSEHOLD APPLIANCES:

Main Salon and Galley:

- [1] MIELE Oven 60cm
- [1] BORA Cooking top
- [1] BORA Exhaust hood
- [1] Sink
- [1] MIELE Dishwasher
- [1] LIEBHERR Wine cooler LIEBHERR for about 30 bottles
- [2] LIEBHERR Small fridges
- [1] LIEBHERR Freezer
- [1] RARITAN Icemaker

Crew Mess:

- [1] MIELE Washer
- [1] MIELE Dryer
- [1] MIELE Microwave
- [1] FRIGONAUTICA Fridge

Exterior Area:

- [1] Cooler drawer

[Modifications/Integrations to the following configuration ore given in Annex D]

ELECTRONIC NAVIGATION EQUIPMENT:

On the Main Deck Wheelhouse:

- [4] GARMIN 24" Ultrawide monitors in the upper part of the console installed under a single glass touch screen 2300 x 430 mm
- [2] GARMIN 28" Ultrawide 16/3 monitors in the horizontal part. under a single glass touch screen 2300 x 190 mm
- [2] Panel with PLC + Network switches (to be installed under console)
- [1] Glass touch screen 2300x430mm (indicative measures)
- [1] Glass touch screen 2300x190mm (indicative measures)
- [4] SEASYacht Software license (GAM, Navigation Conning, Automation features, CCTV)
- [2] Software Radar + Chart plotter + Echosounder
- [1] GARMIN Radar GMR Fantom 24x - white
- [1] Compass MSC-10 Marine satellite compass
- [1] AIRMAR sensor traducer pass plast DST810
- [1] AIRMAR Echo sensor B60
- [1] Antenna GPS 24
- [1] VHF 215i
- [1] Sailor 7222 VHF (with DSC) Class A certified complete of antenna and remote handset
- [1] AIS 800 with cable and antenna
- [1] SIMRAD Autopilot AP70 MKII with processor AC80 and Compass Precision 9
- [1] AIRMAR Weather Station 220WX
- [2] GARMIN processor GPSMAP 8700 Black Box
- [2] Compact computer NXT Marine Type approved

[Modifications/Integrations to the above configuration of Navigation Equipment are reported in Annex D]

AUDIO-VIDEO SYSTEM:

Owner's Cabin:

- Samsung Smart TV Led 55" 4K
- [1] HDMI & USB Wall Plate
- - Streaming: Netflix, Disney+ ecc. via Smart TV. Spotify and Airplay2 via Crestron NAX amplifier
- [2] Dynaudio P4-W65 speaker 6,5" rectangular
- [1] Apple iPad Mini 6 64GB Wi-Fi (Crestron configured)

Main Salon:

- Samsung Smart TV 65" 4K Qled
- [1] HDMI & USB Wall Plate
- Streaming: Netflix, Disney+ ecc. via Smart TV. Spotify via Marantz Cinema 60 amplifier
- [7] Dynaudio P4-W65 rectangular speaker 6,5"
- [1] JL-Audio Home sunwoofer 8" d108
- [1] Apple TV 4K with IP control
- [1] Apple iPad Mini 6 64GB Wi-Fi (Crestron configured)

Vip Cabin (x1) Guest Cabin (x2) Equipment list per Cabin:

- Samsung TV LED 55" 4K for the Vip Cabin
- Samsung TV LED 32" Full HD for the Guests Cabin
- [1] HDMI & USB Wall Plate
- Streaming: Netflix, Disney+ ecc. via Smart TV. Spotify, Sirius and Airplay2 via Bluesound amplifier
- [2] Dynaudio P4-W65 rectangular speaker 6,5"
- [1] Apple iPad Mini 6 64GB Wi-Fi (Crestron configured)

External Area (Beach, Aft Deck, Bow and Flybridge):

- [10] JL-Audio waterproof Speakers 8.8" - 4x Aft Deck, 2x Bow, 4x Flybridge
- [2] JL-Audio waterproof Speakers 7.7" on the Bow
- [1] POWERSOFT amplifier 450W/8 channels with DSP and Dante
- [1] Dedicated Bluesound streaming player for each area with Airplay 2 and Spotify Connect streaming
- Audio and lights control via Main Salon iPad

Party Mode:

Party mode option will replicate settings of **Main Salon** and will merge AV of Flybridge, Aft Deck, Main and Lower deck.

[Modifications/Integrations to the following Audio-Video configuration are reported in Annex D]

OPTIONAL LIST INCLUDED:

- Class R.I.Na. - C ✠ HULL • MACH Y - Unrestricted Navigation (Pleasure Yacht)
- Arch. MARCO CASAMONTI (Studio Archea, Florence) Exclusive Interior Designer Premium Package;
- Integrated Bridge console (SEASYacht);
- Carbonfire staircase;
- Low emission windows in the main deck;
- Nr. 10 Underwater lights RGBW on the transom (no.4 on the transom + no.6 on the sides)
- Dark Metallic paint
- Aft Control Station
- Parallel system
- Seamless Transfer: "No-Power-blackouts" smart technology in order to avoid the blackouts from switching the genset power onto the shore power supply;
- Flydeck mini pilot station;
- Gyroscopic stabilizer Seakeeper mod. 26; working at anchor ("Zero Speed") and in navigation ("underway")
- AIS + Weather Station
- Customized POLTRONA FRAU package (exterior cushions, helm station)
- Night vision camera predisposition (camera not included);
- Outside tent aft-located poles [4 poles] and at bow [4 poles], and on the flydeck [6 poles]; complete with [tot. 14] carbon fibre poles and micro-holed fabric (mesh type)
- Electric blind curtains in the Salon
- Electric blind curtains in the Lower Deck's accommodations (Owner- Vip - Guest's Cabin)
- Electric black-out rollers in the Lower Deck's accommodations (Owner- Vip - Guest's Cabin)
- [1] 180Lt/hr Watermaker instead of 130 lt/hr (Std)
- Starlink predisposition
- Portholes sensors
- Monitoring System
- 15" Monitor in the crew mess with monitoring system redundancy
- [2] external tables with up/down electric mechanism [n.1 in the aft cockpit, n.1 in the fwd area]
- Air Compressor, with 3 connection points (n.1 in the aft area, n.1 in the bow area, n.1 in the E.R.)
- Teak on Flydeck
- Day Head in the Salon
- SCR Exhaust for Main Propulsion Engines

CCTV (5-camera) system:

- [3] Lilin Z5R6422X3 2Mega Pixel network camera with IR
- [2] Lilin mini PTZ Cameras (no IR) cod. PZD6422EX3, in the Engine Room
- [2] Lilin NVR6104E 4ch - 1000M port NVR recorder 4ch
- LAN and WiFi NETWORK: 5G system

IT AND Wi-Fi:

- [1] Peplink MAX BR1 Mini LTEA router - WiFi - worldwide for Marina hotspot communications
- [1] Ubiquiti Dream Machine Pro Router wireless controller, Firewall
- [1] Ubiquiti with 48 POE switch for all physical ethernet connections
- [5] Ubiquiti Access Point UniFi 6 Long-Range 3000 Mbit/s PoE (distributed across all decks)
- [2] Scan Antenna Marine & Coastal Wi-Fi Gain 9dBi
- [2] Scan Antenna Marine & Coastal LTE Gain 9dBi

Garage Tender Capacity for:

- Tender 4.50 meters [tender not included]
- Jet ski (3-seat personal water craft) [jet ski not included]

Laundry in the Lower deck with:

- [1] Additional washing machine
- [1] Additional drier-machine
- LAN and WiFi NETWORK: 5G system
- [2] Additional cooler drawers, with 1 drawer each, on the external areas
- Stainless steel Rub-Rail
- Frequency Converter 55 KVA

For any other possible item or customization request, the Shipbuilder will evaluate the feasibility and in case will provide a quotation

AWARDS

WORLD SUPERYACHT AWARDS 2025

Semi-Displacement or Planing Motor Yachts - 30m to 39.9m.



WORLD YACHT TROPHIES 2024

Best Exteriors